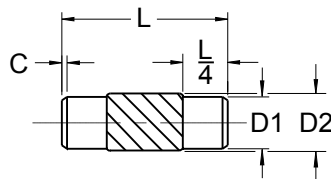


SPIROL® Helical Grooved Pins utilize a unique wide band knurl configuration. Broad, low profiled peaks spiral about the body of the pin, allowing the pin to maintain its integrity when installed into a hardened hole. They offer the following benefits:

- ⊙ High shear strength
- ⊙ Low and consistent installation forces
- ⊙ Clean installation without metal shavings
- ⊙ Reliable press-fit retention in hardened host materials

Half Length Centered Series GP210



	INCH SPECIFICATIONS							METRIC SPECIFICATIONS							
		1/16	3/32	1/8	5/32	3/16	1/4		1.5	2	2.5	3	4	5	6
Nominal Diameter		.0625	.0938	.1250	.1563	.1875	.2500		1.5	2	2.5	3	4	5	6
Diameter "D1"	Min.	.0595	.0908	.1220	.1533	.1845	.2470	Min.	1.43	1.93	2.43	2.93	3.93	4.93	5.93
	Max.	.0615	.0928	.1240	.1553	.1865	.2490	Max.	1.48	1.98	2.48	2.98	3.98	4.98	5.98
Diameter "D2"	Min.	.0645	.0958	.1270	.1583	.1895	.2520	Min.	1.55	2.05	2.55	3.05	4.05	5.05	6.05
	Max.	.0665	.0978	.1290	.1603	.1915	.2540	Max.	1.60	2.10	2.60	3.10	4.10	5.10	6.10
Chamfer "C"		.005	.005	.005	.005	.016	.016		0.15	0.15	0.15	0.15	0.4	0.4	0.4
Recommended Hole	Min.	.0625	.0938	.1250	.1563	.1875	.2500	Min.	1.50	2.00	2.50	3.00	4.00	5.00	6.00
	Max.	.0635	.0948	.1260	.1573	.1885	.2510	Max.	1.53	2.03	2.53	3.03	4.03	5.03	6.03
Minimum Double Shear 6150 High Strength Alloy Steel	Lbs.	600	1450	2650	4200	6100	10900	kN	2.6	4.7	7.4	10.7	19.2	30.2	43.7
Nominal Diameter		1/16	3/32	1/8	5/32	3/16	1/4		1.5	2	2.5	3	4	5	6
Length "L"	.250							6							
	.312							8							
	.375							10							
	.438							12							
	.500		Length Tolerance ± .010					14	Length Tolerance ± 0.25						
	.562							16							
	.625							20							
	.750							24							
	.875							26							
	1.000							30							
	1.250							35							
	1.500							40							
	1.750							45							
	2.000							50							
2.250							55								

Standard material: AISI 6150 High Strength Alloy Steel (W).

- ⊙ Dimensions apply before plating.
- ⊙ Please call for product availability.

Part Number Code

TO ORDER: SLDP (Nominal Diameter)x(Length)(Material)(Finish)(Pin Series Number)
 EXAMPLE: SLDP 2 x 20 WK GP210

SPIROL®

Innovative fastening solutions.
Lower assembly costs.



Challenge Us!

SPIROL Application Engineers will review your application needs and work with your design team to recommend the best solution. One way to start the process is to visit our **Optimal Application Engineering** portal at www.SPIROL.com.

U.S.A. **Spirol International Corporation**
30 Rock Avenue
Danielson, Connecticut 06239
Tel. +1 860.774.8571
Fax. +1 860.774.2048
(US Distributors: Fax. +1 860.774.0487)

**Spirol International Corporation
Shim Division**
321 Remington Road
Stow, Ohio 44224
Tel. +1 330.920.3655
Fax. +1 330.920.3659

Spirol West Inc.
1950 Compton Avenue, Unit 111
Corona, California 92881-6471
Tel. +1 951.273.5900
Fax. +1 951.273.5907

Canada **Spirol Industries, Ltd.**
3103 St. Etienne Boulevard
Windsor, Ontario
Canada N8W 5B1
Tel. +1 519.974.3334
Fax. +1 519.974.6550

Mexico **Spirol México, S.A. de C.V.**
Carretera a Laredo KM 16.5 Interior E
Col. Moisés Saenz
Apodaca, N.L. 66613 México
ó Apdo. Postal 151 de Apodaca, N.L.
Tel. +52 81 8385 4390
Fax. +52 81 8385 4391

Europe **Spirol Industries, Ltd.**
Princewood Road
Corby, Northants
NN17 4ET United Kingdom
Tel. +44 1536 444800
Fax. +44 1536 203415
(UK Distributors: Tel. 0800 3890034)

Spirol SAS
Rue Henri Rol Tanguy
Z.A. Les Naux
51450 Bétheny - Reims
France
Tel. +33 3 26 36 31 42
Fax. +33 3 26 09 19 76

Spirol GmbH
Brienner Strasse 9
80333 Munich
Germany
Tel. +49 931 454 670 74
Fax. +49 931 454 670 75

Spirol SAS en España
08940 Cornellà de Llobregat
Barcelona
Spain
Tel. +34 93 193 05 32
Fax. +34 93 193 25 43

Spirol S.A.S., organizační složka
Sokola Tůmy 743/16
Ostrava-Miriánské Hory 70900
Czech Republic
Tel/Fax. +420 417 537 979

Asia Pacific **Spirol International Engineered
Fastener Trading Co. Ltd.**
No. 11 Xi Ya Rd. North
Section A, 1F, Building 14
Wai Gao Qiao Free Trade Zone
Shanghai, China 200131
Tel. +86 21 5046-1451/1452
Fax. +86 21 5046-1540

e-mail: info@spirol.com

SPIROL.com